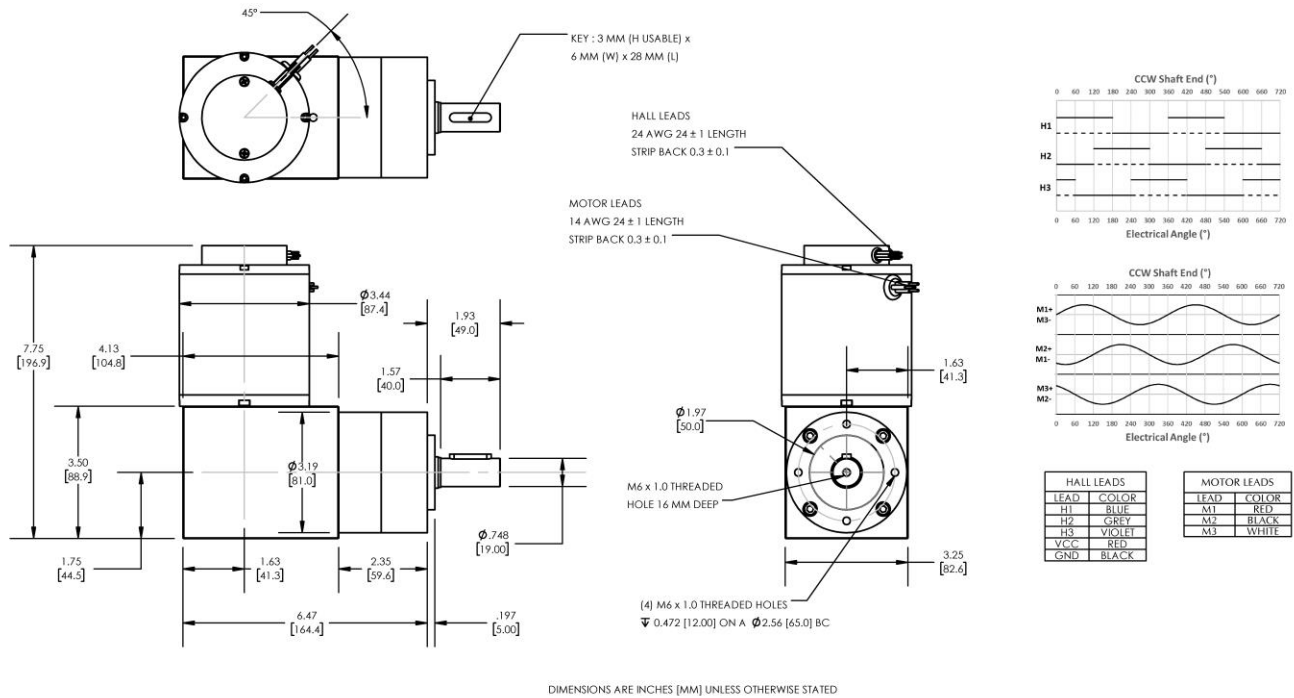




# REVERSIBLE BRUSHLESS DC RIGHT-ANGLED GEARMOTOR

**Model Number:**

**MMP BL86-425F-36V GRA81-005**



PLANETARY GEARMOTOR OUTPUT PARAMETERS:	VALUE	UNITS	TOLERANCE
Gearhead Ratio (exact)	5.18 : 1		
Gearhead Shaft Output Speed (at full-load)	610	RPM	MAX
Gearmotor Rated Continuous Torque	38	In-Lbs	MAX
Gearmotor Rated Peak Torque	83++	In-Lbs	----
Gearhead Standard Backlash	30	Arc Minutes	MAX
Gearhead Efficiency	80%	----	----
Output Shaft Radial Load Capacity	90	Lbs	MAX
Output Shaft Axial Load Capacity	18	Lbs	MAX
Gearmotor Total Weight	12	Lbs	MAX

++ All Peak Torque values are dependent upon duty. Contact our sales office for details.

DC MOTOR PERFORMANCE PARAMETERS:	VALUE	UNITS	TOLERANCE
Rated DC Voltage	36	DC VOLTS	----
Rated Continuous Current	14.9	AMPERES	----
No-Load Speed	4675	RPM	MAX
Rated Speed	3159	RPM	+/- 15%
Rated Continuous Power Out	343	WATTS	+/- 15%
Rated Continuous Torque	147	OZ-IN	----
Peak Torque (motor only)	320	OZ-IN	----
No-Load Current	0.86	AMPERES	MAX
Back EMF Constant (Ke)	7.7	V/KRPM	+/- 10%
Torque Constant (Kt)	10.4	OZ-IN/AMP	+/- 10%
DC Armature Resistance	0.78	OHMS	+/- 15%
Armature Inductance	0.69	mH	+/- 15%
Armature temperature	155	DEG. C	MAX

**NOTES:**

- ENCODER & BRAKE OPTIONS AVAILABLE – [FOLLOW THIS LINK FOR DETAILS](#)
- NEMA MOUNTING FLANGE OPTION AVAILABLE – [FOLLOW THIS LINK FOR DETAILS](#)

**MIDWEST MOTION PRODUCTS, INC**

**DESIGN, MANUFACTURING & DISTRIBUTION - MOTION CONTROL EQUIPMENT**

[www.midwestmotion.com](http://www.midwestmotion.com)

email: [sales@midwestmotion.com](mailto:sales@midwestmotion.com)